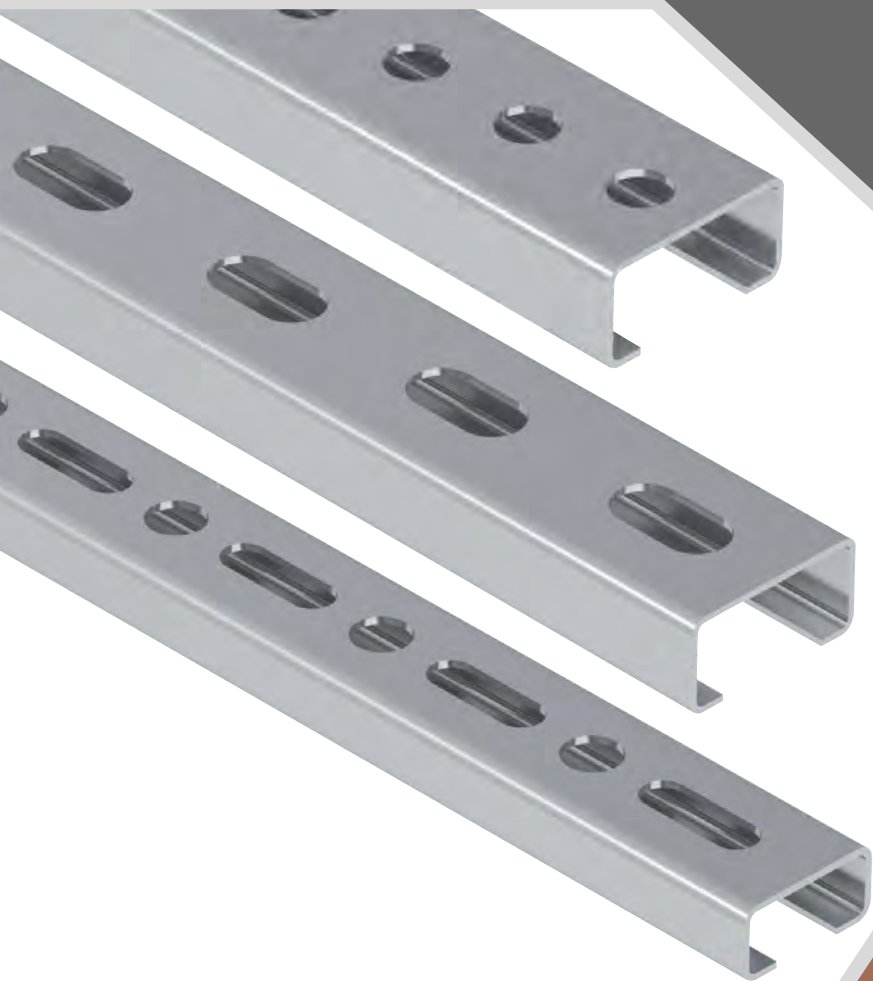




ЕНЕРДЖИ ГРУП ООД

Метални профили

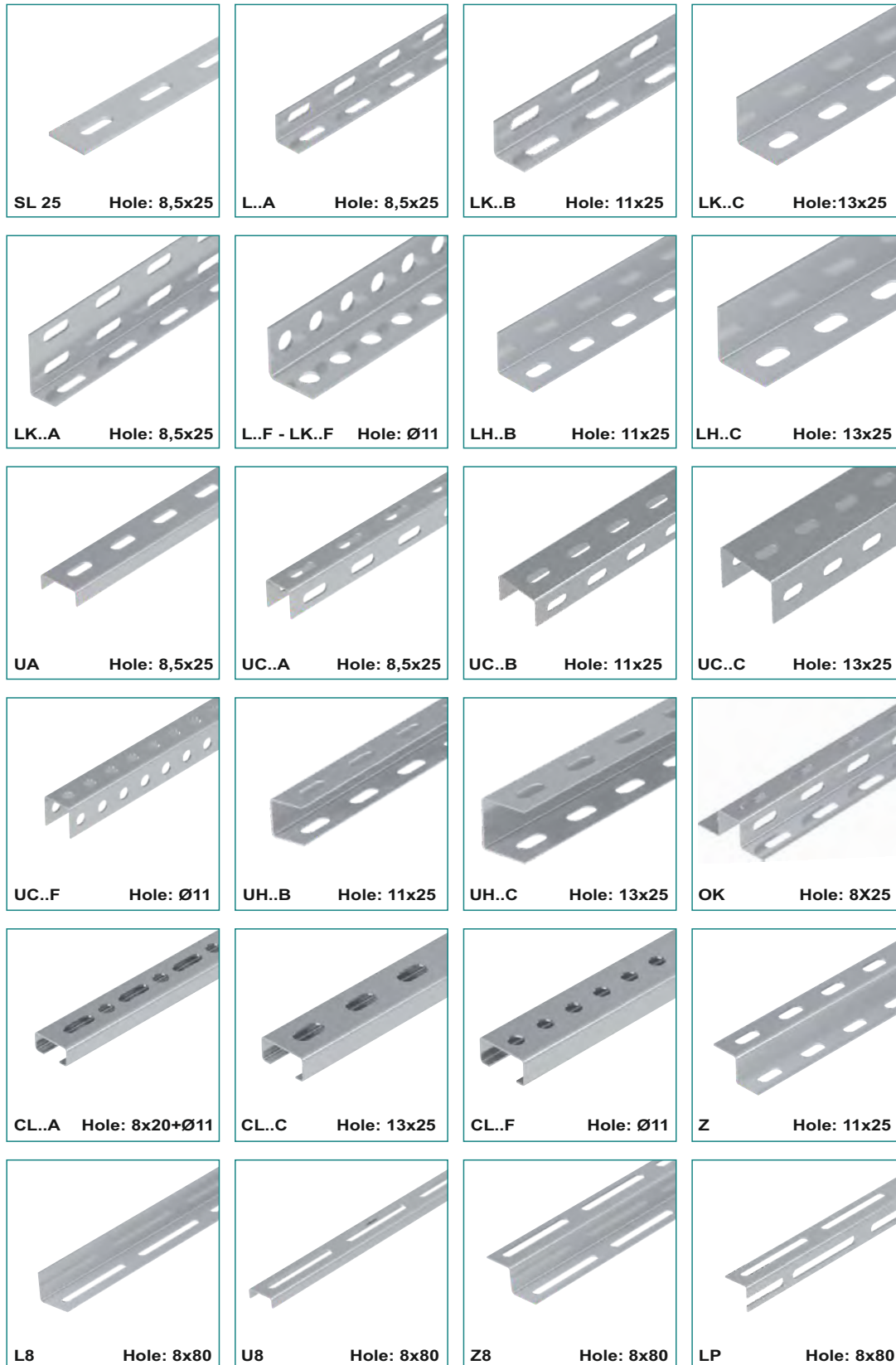


PROFILES

Системи за електрически кабелни скари

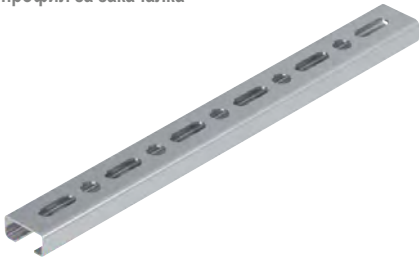
**www.abelectric.bg
www.abenergygroup.bg**

Profiles



Hanging C Rail

профил за закачалка



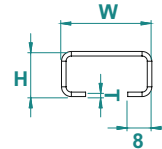
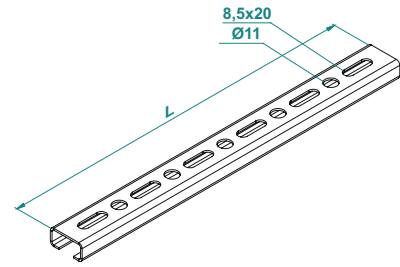
Pre-Galvanized EN 10346

CL...A		L:2000				
CODE	Size mm HxW	Thickness T mm	Hole Size mm	kg 1mt	pcs	
CL 2715A 10 PG	15x27	1,0	8,5x20	0.49	1	
CL 2715A 12 PG	15x27	1,2	8,5x20	0.58	1	
CL 2718A 10 PG	18x27	1,0	8,5x20	0.53	1	
CL 2718A 12 PG	18x27	1,2	8,5x20	0.63	1	
CL 3015A 12 PG	15x30	1,2	8,5x20	0.60	1	
CL 3015A 15 PG	15x30	1,5	8,5x20	0.74	1	
CL 3020A 15 PG	20x30	1,5	8,5x20	0.85	1	
CL 3028A 15 PG	28x30	1,5	8,5x20	1.02	1	

Hot Dip Galvanized EN ISO 1461

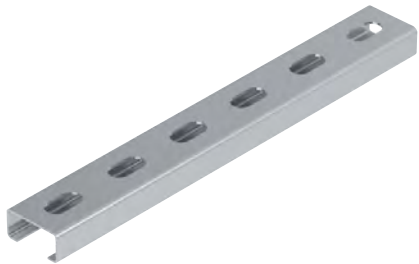
CL...A		L:2000				
CODE	Size mm HxW	Thickness T mm	Hole Size mm	kg 1mt	pcs	
CL 2715A 10 HDG	15x27	1,0	8,5x20	0.54	1	
CL 2715A 12 HDG	15x27	1,2	8,5x20	0.64	1	
CL 2718A 10 HDG	18x27	1,0	8,5x20	0.59	1	
CL 2718A 12 HDG	18x27	1,2	8,5x20	0.70	1	
CL 3015A 12 HDG	15x30	1,2	8,5x20	0.67	1	
CL 3015A 15 HDG	15x30	1,5	8,5x20	0.82	1	
CL 3020A 15 HDG	20x30	1,5	8,5x20	0.94	1	
CL 3028A 15 HDG	28x30	1,5	8,5x20	1.13	1	

CL...A



Hanging C Rail

профил за закачалка



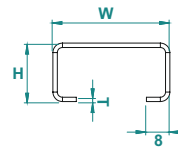
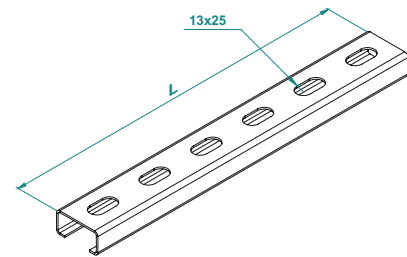
Pre-Galvanized EN 10346

CL...C		L:3000				
CODE	Size mm HxW	Thickness T mm	Hole Size mm	kg 1mt	pcs	
CL 4020C 15 PG	20x40	1,5	13x25	1.00	1	
CL 4020C 20 PG	20x40	2,0	13x25	1.30	1	
CL 4038C 15 PG	38x40	1,5	13x25	1.38	1	
CL 4038C 20 PG	38x40	2,0	13x25	1.81	1	
CL 5040C 20 PG	40x50	2,0	13x25	2.01	1	
CL 6040C 20 PG	40x60	2,0	13x25	2.15	1	

Hot Dip Galvanized EN ISO 1461

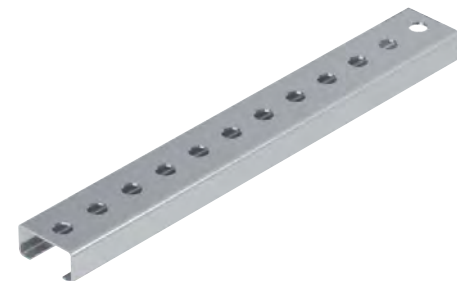
CL...C		L:3000				
CODE	Size mm HxW	Thickness T mm	Hole Size mm	kg 1mt	pcs	
CL 4020C 15 HDG	20x40	1,5	13x25	1.11	1	
CL 4020C 20 HDG	20x40	2,0	13x25	1.44	1	
CL 4038C 15 HDG	38x40	1,5	13x25	1.53	1	
CL 4038C 20 HDG	38x40	2,0	13x25	2.01	1	
CL 5040C 20 HDG	40x50	2,0	13x25	2.23	1	
CL 6040C 20 HDG	40x60	2,0	13x25	2.39	1	

CL...C



Hanging C Rail

профил за закачалка



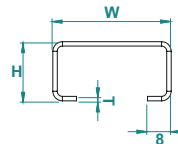
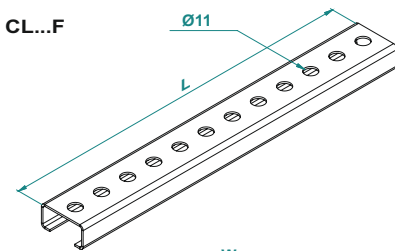
Pre-Galvanized EN 10346

CL...F		L:3000				
CODE	Size mm HxW	Thickness T mm	Hole Size mm	kg 1mt	pcs	
CL 4020F 12 PG	20x40	1,2	Ø11	0.81	1	
CL 4020F 15 PG	20x40	1,5	Ø11	1.00	1	
CL 4020F 20 PG	20x40	2,0	Ø11	1.30	1	

Hot Dip Galvanized EN ISO 1461

CL...F		L:3000				
CODE	Size mm HxW	Thickness T mm	Hole Size mm	kg 1mt	pcs	
CL 4020F 12 HDG	20x40	1,2	Ø11	0.90	1	
CL 4020F 15 HDG	20x40	1,5	Ø11	1.11	1	
CL 4020F 20 HDG	20x40	2,0	Ø11	1.44	1	

CL...F



MATERIAL

Steel, strip-galv. acc. to the sendzimir method to TS-EN 10346:2011 (PG)

HDG-Steel, hot-dip galv. to TS-EN ISO 1461:2011 (HDG)

Available finishes:

SS - Stainless steel AISI 304L and aisi 316L (SS)
EP- powder coating in a full range of colours (RAL)

Thickn. (ga) [mm]: 1.5 2.0 2.5 3.0